



Company Overview
and
Update on Cameroon Projects

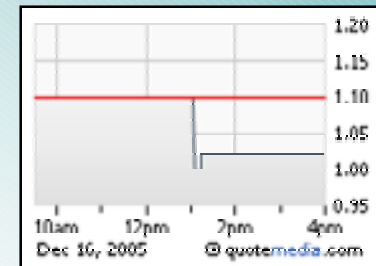


Company Overview



TRANSNATIONAL
AUTOMOTIVE
GROUP Inc.

Public Company



**Company files for change
of Name and Ticker Symbol**

from:

Apache Motors (“AHMR”)

to:

**Transnational Automotive
Group, Inc. (“TAMG”)**

SEC Requirements

Public companies, which issue stock and also trade on the New York Stock Exchange, NASDAQ, or the Over-the-Counter Board (“OTC”), are required to observe defined and regimented SEC requirements.

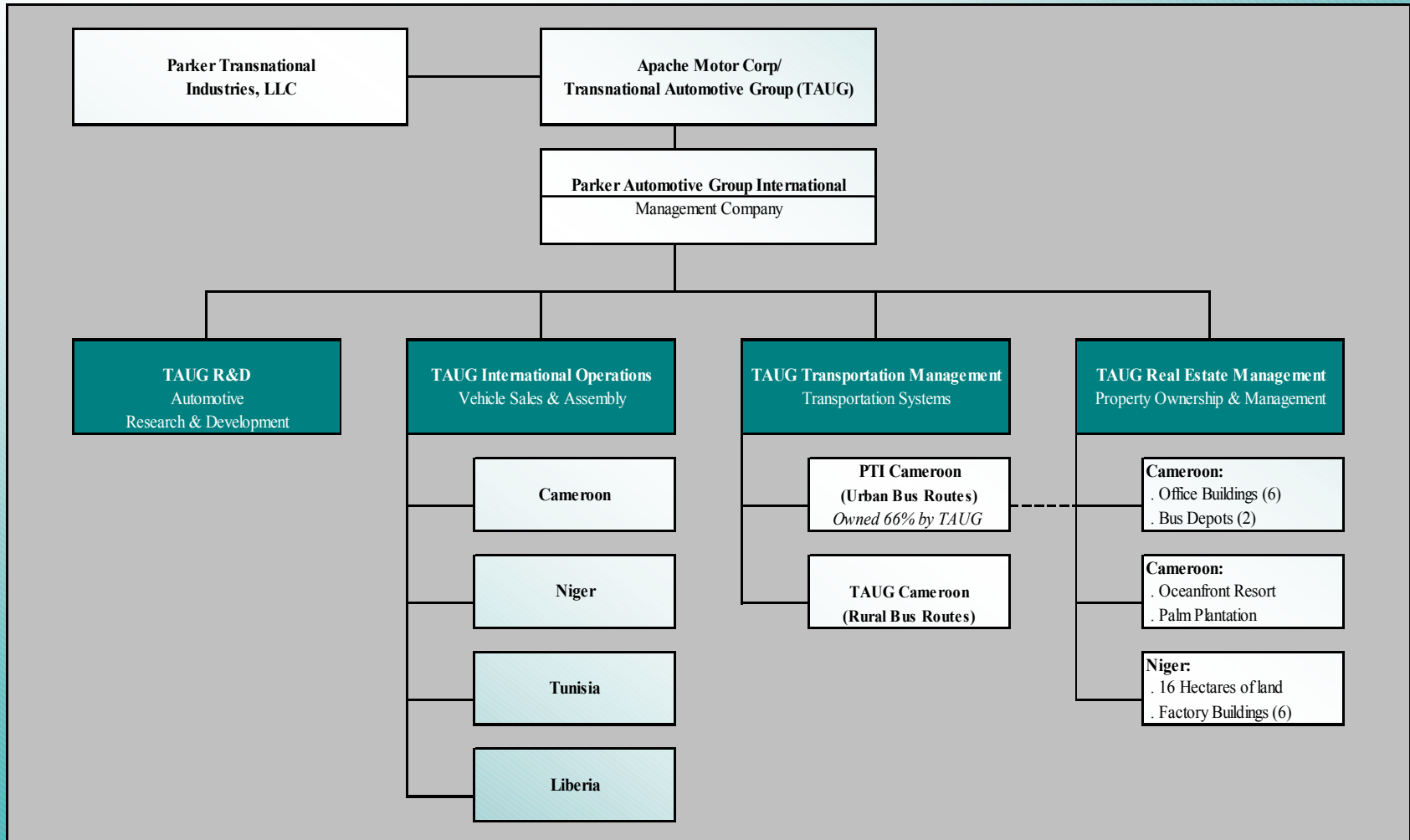
These SEC requirements subject publicly traded companies to the strict adherence of corporate governance, compliant financial and operational record-keeping, timely and accurate reporting of significant business transactions, notification to shareholders of significant contracts and changes in the business, and maintenance of timely and accurate financial reporting.

As a result, public companies are clearly held responsible to their shareholders for the actions and accurate reporting of the business by management to its shareholders.



**TRANSNATIONAL
AUTOMOTIVE
GROUP Inc.**

Our Company



Management Staff

Corporate Office:

- Joseph W. Parker,
Chairman & CEO
- James G. Buck,
President
- Harry M. Stokes,
Chief Operating Officer
- Daniel C. Goldman,
Chief Financial Officer
- Yilin Yang,
Executive Assistant to CEO,
China Specialist

Operating Divisions:

- TAUG R&D
 - Michael J. Jones,
Manager, R&D
- TAUG International
 - Lal Karsanbhai
Automotive Technical Manager
- TAUG Transportation
 - Donald J. Durand
VP Operations
- TAUG Real Estate
 - R. Brent Christie
VP Real Estate & Hospitality



OPIC



TAUG has received positive indications and encouragement from the Overseas Private Investment Corporation (“OPIC”) regarding TAUG’s efforts and initiatives in Cameroon and other countries in Africa.

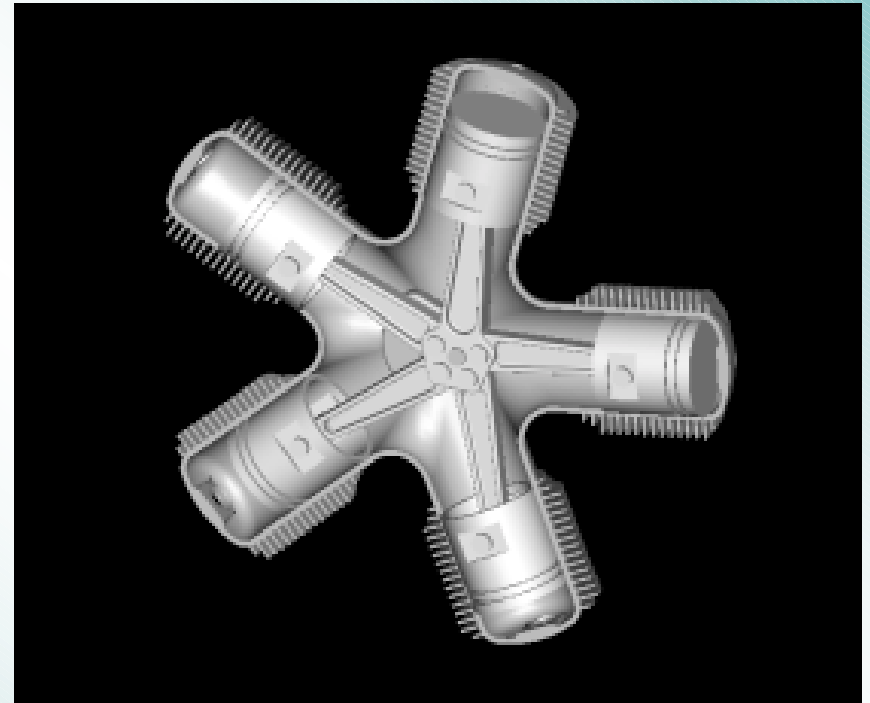
OPIC is an agency of the United States Government.



TAUG R&D

Radial Engine

- Engine similar to one found in smaller aircraft.
- Potential for high thermal efficiency.
- Unique proprietary 2 stage inlet valves.
- Engine displacement can be modified to suit specific needs.
- Future uses include hybrid technology and diesel.

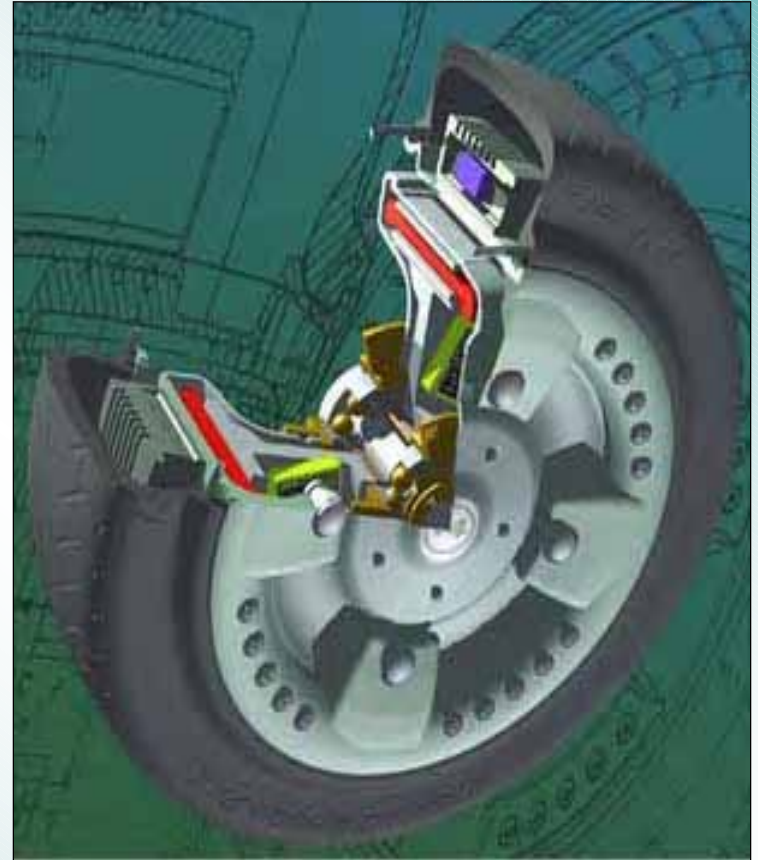




TRANSNATIONAL
AUTOMOTIVE
GROUP Inc.

In Wheel Electric Motor Hybrid

- Ability to increase the range of current hybrids by 200%.
- Recent development in computer controls have made it possible to control all 4 wheels independently.
- Utilize the energy lost in deceleration to charge batteries.
- Using an in-wheel electric motor combined with rotary or radial engine to eliminate need for a separate charging station.
- Est. timeframe to develop limited production is 12 to 18 months.
- TAUG proprietor of patent technology.

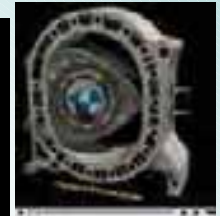
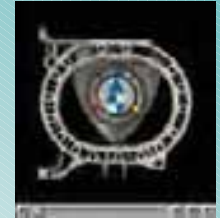




TRANSNATIONAL
AUTOMOTIVE
GROUP Inc.

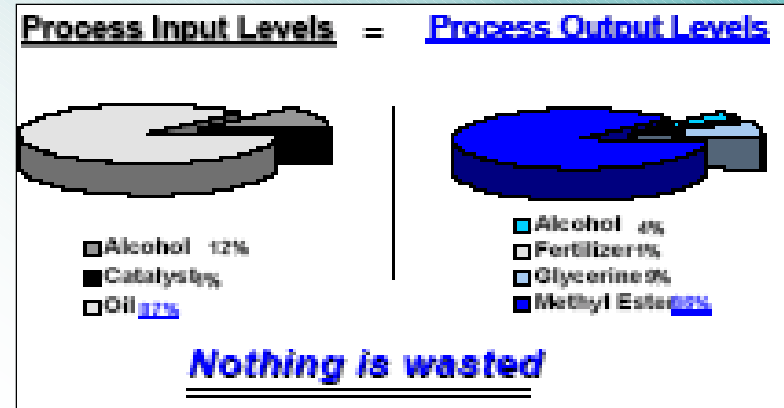
Rotary Diesel Concepts

- Modify current technology that has been time tested and very durable.
- Perfect new method for igniting diesel fuel. "Stratified charge"
- Rotary engine produces very linear torque translates into lower drivetrain stress.
- Power to weight ratio is unrivaled.
- Inherent flaws within rotary engine original design will be used to our advantage.
- Modular design will allow quick turn-around times in case of failure.
- Designed for in field repair with limited tools or facilities.
- Future uses include hybrid technology.



Palm Oil Methyl ester

- Methyl ester from Palm Oil (Commonly known as Biodiesel) has vast potential.
- Potential for small farming co-ops to supplement needs.
- Refinement without waste or toxic substances.
- Byproducts from refinement include glycerol, potassium phosphate.



Typical oil extraction from 100 kg. of oil seeds

Castor Seed	36 kg
Copra	62 kg
Cotton Seed	13 kg
Groundnut Kernel	42 kg
Mustard	35 kg
Rapeseed	37 kg
Palm Kernal	36 kg
Palm Fruit	20 kg
Sesame	50 kg
Soyabean	14 kg
Sunflower	32 k

Palm Methyl ester Potential

- Highest kilogram per hector yield of all oil bearing crops.
- Energy potential in refined Palm Oil is only 6% less than high grade petroleum diesel.
- High cetane values.
- Low iodine value.

Ascending order				
Crop	kg oil/ha	litres oil/ha	lbs oil/acre	US gal/acre
corn (maize)	145	172	129	18
cotton	273	325	244	35
hemp	305	363	272	39
soybean	375	446	335	48
coffee	386	459	345	49
linseed (flax)	402	478	359	51
mustard seed	481	572	430	61
sesame	585	696	522	74
safflower	655	779	585	83
rice	696	828	622	88
sunflowers	800	952	714	102
peanuts	890	1059	795	113
rapeseed	1000	1190	893	127
olives	1019	1212	910	129
castor beans	1188	1413	1061	151
coconut	2260	2689	2018	287
oil palm	5000	5950	4465	635

Winning Combination

- Combine natural resources and TAUG technology.
- Gain positive environmental impacts.
- Create economic benefits.
- Improve self-sufficiencies.





TAUG Transportation



TRANSNATIONAL
AUTOMOTIVE
GROUP Inc.



PTI management meets with Cameroon leadership to discuss transportation solutions for Cameroon. From left to right Ambassador to the United States Jerome Menduga, Harry Stokes PTI COO, Secretary General Emmanuel Nganou, Prime Minister Ephraim Inoni and PTI President Jim Buck.



TRANSNATIONAL
AUTOMOTIVE
GROUP Inc.

City Bus

- 12 meter City bus
- Seats 42 with 35 standing
- Chinese Cummins diesel
- 5 Speed Manual
- Air conditioned
- 2 Doors





TRANSNATIONAL
AUTOMOTIVE
GROUP Inc.

Yaounde City Bus Service





TRANSNATIONAL
AUTOMOTIVE
GROUP Inc.

Smaller City Bus Option

6 Meter bus for charter
or special projects





TRANSNATIONAL
AUTOMOTIVE
GROUP Inc.

Possible Double-Deck City Bus



Possible double-deck
bus for the future





PTI-C Cameroon Urban Transit



Operations Start-Up Plan

Building a solid foundation for a well-run, well-organized and sustainable Cameroonian company, emphasizing:

- . Partnership
- . Trust
- . Results

The Vision

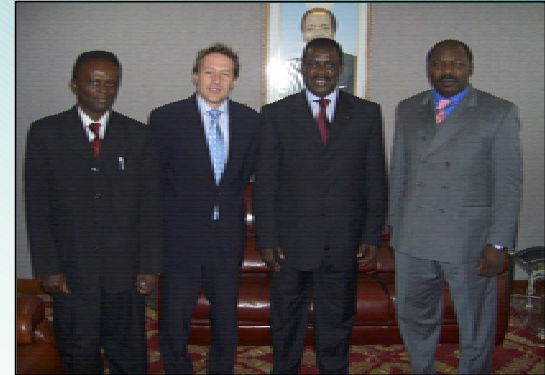
- To get Cameroonians to work on-time, cheaply and safely.

The Mission

- To build a sustainable and well-run urban bus operation by end of 2006.
- To re-invigorate the Yaoundé downtown core by renovating 3 key office building complexes.

The Purpose (Why)

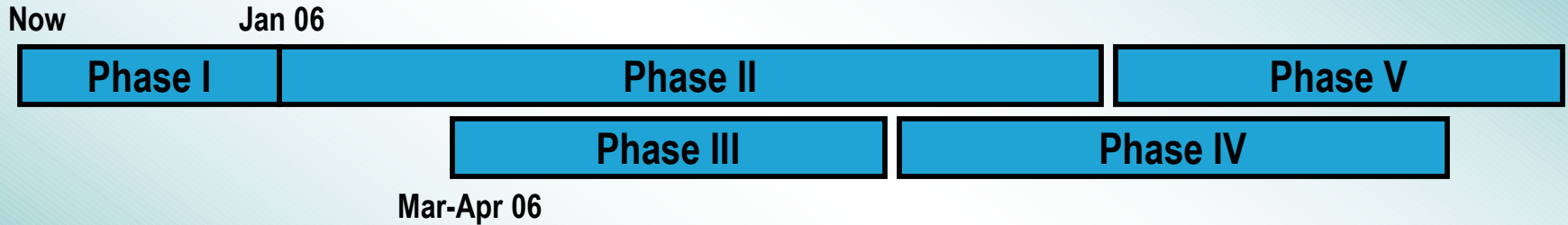
- Because a sustainable transport system will improve the lives and security of millions Cameroonians.
- Because the combination of an updated office infrastructure and transportation system will stimulate economic activity and investment – which will create jobs!
- Because this process will serve the development of a transport system in Douala and other cities in Cameroon.
- Because this vision will serve as an example and case study to stimulate more foreign investment.





The Overall Start-up Strategy

- Phase I: Complete Preparation and Administration
- Phase II: Renovation, Construction and Training
- Phase III: Operational Testing and Open First Lines
- Phase IV: Open Lines Incrementally
- Phase V: Constant Improvement and Scalability



Bus	5 buses					15 -15 -20 -20 -20 - 20						
HR	Key Hires		Admin, Technicians, Security			Bus Security and Conductors						
	10Drivers		50 Drivers		50 Drivers		50 Drivers		50 Drivers			
PR	Discuss Plan Show work		Show buses Discuss Ph II			Show transformation of depot Discuss Phase III Start discussing procedures and rules			Advertise Start Rules & Fares		Discuss Phase IV, V Procedures and rules	

Note: We do not yet know how many buses will meet demand. This will be developed over time and we will ensure we have sufficient capacity.



TRANSNATIONAL
AUTOMOTIVE
GROUP Inc.

Political Profile Strategy

- We are paying CRTV \$26,000 USD to develop a TV documentary to show the start-up of LeBus from start to launch
- Benefits:
 - Raise positive international profile that Cameroon is good place to invest
 - Show Cameroon people that similar projects are possible.
 - Useful political tool to develop citizen support





TAUG Assembly & Sales

Assembly & Sales

TAUG Assembly & Sales is a full service automotive company specializing in emerging markets. Our products and services include:

Automotive sales and distribution of a full model lineup of cars, trucks, and buses through automotive dealerships.



Sales and distribution of automotive products from Refined Global Solution, Inc. including OilRig®, SuperRig®; FleetWatch®, Clean Boost®, MettlePlus®, and other aftermarket parts, products, and services.



In-country, CKD (Completely Knocked Down) and SKD (Semi-Knocked Down) automotive assembly plants.



TRANSNATIONAL
AUTOMOTIVE
GROUP Inc.

Assembly & Sales



Automotive fleet operations, including fleet financing and sales, vehicle supply, fleet maintenance, and fleet leasing of almost any kind of automotive fleet; including taxi, buses, truck transportation, corporate, government, and military fleets.

Any and all of the above products and services can be combined into a single or several business entities. Businessmen, businesses, entrepreneurs, governments, and organizations interested in a TAUG franchise, partnership, or services should visit our Website: www.transauto-group.com.





TAUG Real Estate



TRANSNATIONAL
AUTOMOTIVE
GROUP Inc.

CNR Building

Strategy:

**Transform Building to Class “A”
Corporate Office Center**

~ ~

Market to High Pay Business Occupants

~ ~

**Modernize Building Exterior
Refashion Interior Space**

~ ~

**Home to TAUG Corporate Operations
Quality Management & Maintenance**



Shell Building

Strategy:

**Revitalize Building to High Standing
Retail and Commercial Complex**

~ ~

**Integrate two floors of high traffic retail
and support services to compliment
Commercial Office Clientele**

~ ~

Completely regenerate the building with:

- State of the art utilities infrastructure
- Contemporary Exterior Appearance
- Fashionable Interior Space Design





TRANSNATIONAL
AUTOMOTIVE
GROUP Inc.

Ministerial Buildings

Strategy:

**Create a high profile “mixed use”
Multiplex Center of retail, office, hotel,
housing and entertainment for
Yaounde**

- Create a vital complimentary community of integrated attractions:
 - First Class American brand hotel
 - Prestigious condominiums
 - Magnet retail stores
 - Restaurants and Entertainment
 - Full service office space
- Renew exterior appearance
- Develop anchor hotel tower
- Pre-sell view condos over hotel





**TRANSNATIONAL
AUTOMOTIVE
GROUP Inc.**

Investing in Cameroon's Future

Expanding the Vision

8 Acres adjacent to Ministerial Building

- Class "A" Office Building
- State of the Art Automotive Dealership



Victoria Botanical Garden Resort Hotel

- Redeveloping new 75 Resort Room Resort



500 Acre Development

- Five Star World Class Resort
- R & D Center



Executing the Vision

\$20,000,000 Financing awaiting placement

- Building Plans and Specifications
- Final Sign Off Commitment

8 Weeks to Activity

- Start work by mid January

Begin with Ministerial Multiplex Building

- Initiating investment and Economic Activity

